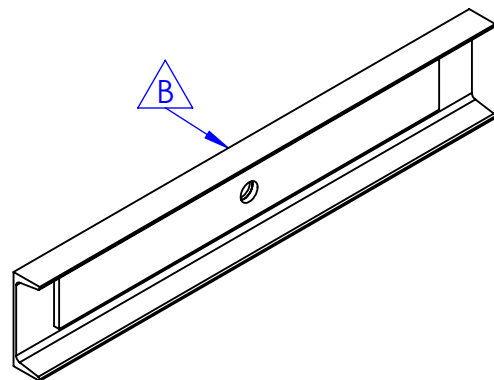
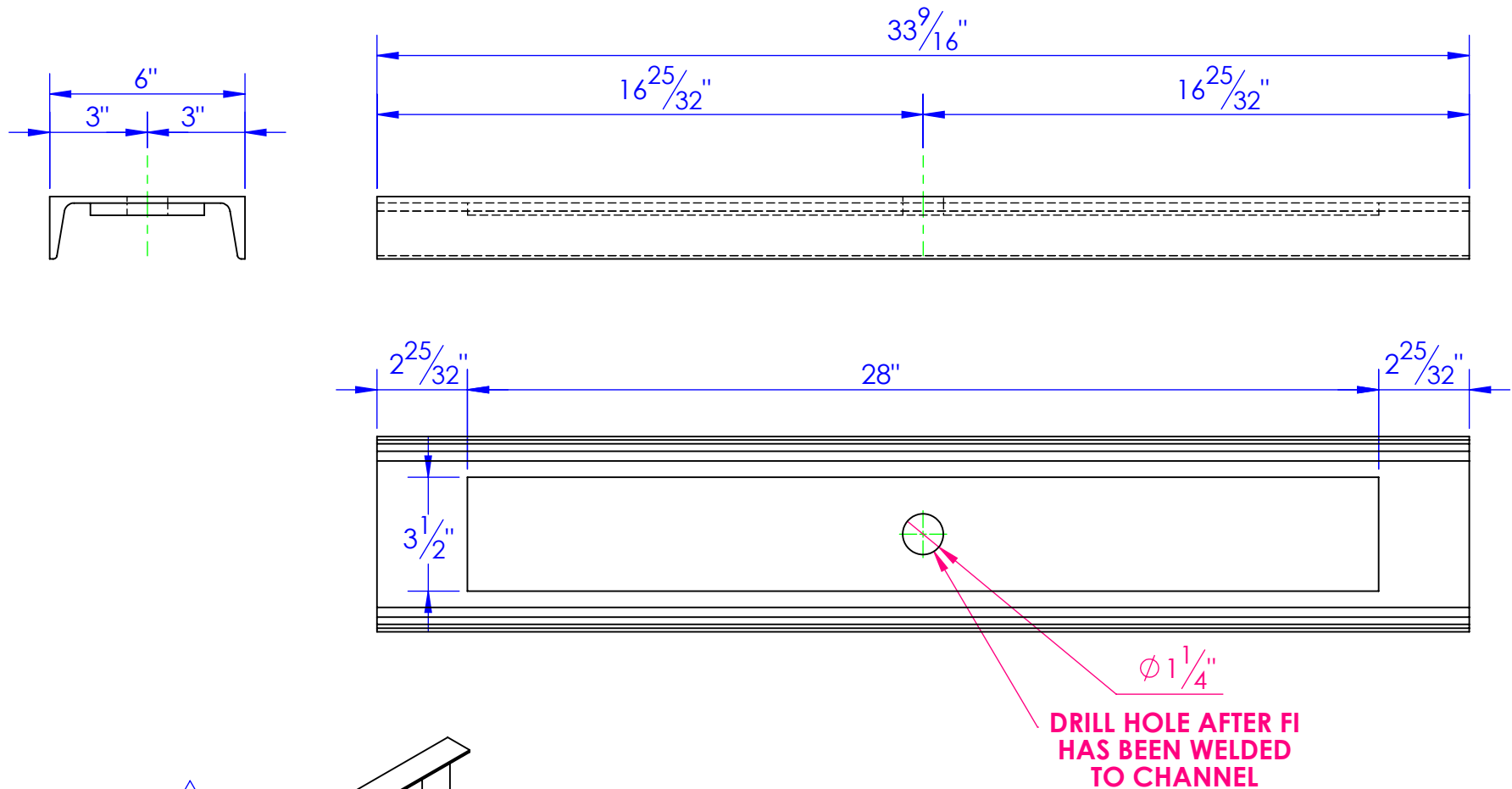


ITEM NO.	PART NUMBER	DESCRIPTION	MATERIAL	QTY.
1	FI .375x3.5 L 28 with hole	LENGTH: 28"	3/8 x 3-1/2" HRS.	1
2	CI 6x8.2 L 33.5625	LENGTH: 33-9/16"	CI 6x8.2	1

REVISIONS			
REV.	DESCRIPTION	DATE	APPROVED
B	UPDATED TO MATCH 3D MODEL	3/7/2012	



PROPRIETARY AND CONFIDENTIAL
THE INFORMATION CONTAINED IN THIS DRAWING IS THE SOLE PROPERTY OF TRIPLE C INC. ANY REPRODUCTION IN PART OR AS A WHOLE WITHOUT THE WRITTEN PERMISSION OF TRIPLE C INC. IS PROHIBITED.

DIMENSIONS ARE IN INCHES
TOLERANCES:
FRACTIONAL $\pm 1/16$
ANGULAR: MACH ± 1 BEND \pm
TWO PLACE DECIMAL ± 010
THREE PLACE DECIMAL ± 005

MATERIAL ---
DO NOT SCALE DRAWING

NAME	DATE
DRAWN HEATH	3/7/2012
PART # FB-5THWL	
ASM #	

COMMENTS:
FIFTH WHEEL MOUNT, FLAT BED, WLDMT

P.O. BOX 248,
SABETHA, KS 66534

TRIPLE C
INC.

SIZE A	DWG. NO. 80-1100 B	REV. B
SCALE: 1:5	WEIGHT: 33.39	SHEET 1 OF 1